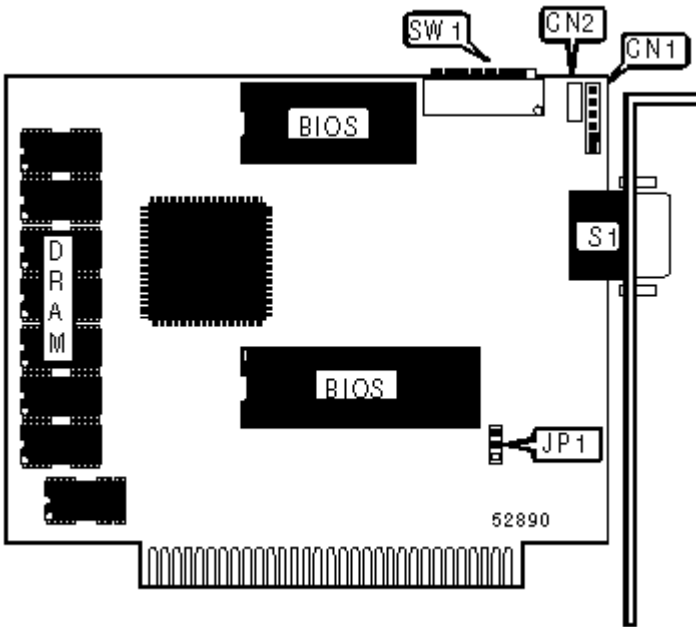


# GRAPHICS SOLUTION (VER. 2) video card Settings and Configuration

---

## **ATI TECHNOLOGIES, INC.** **GRAPHICS SOLUTION (VER. 2)**

<b>Card Type</b>	Video card
<b>Video Chip Set</b>	VLSI
<b>Highest Resolution Supported</b>	720 x 348
<b>Maximum Video Memory</b>	Unidentified
<b>Data Bus</b>	8-bit ISA
<b>Video Types Supported</b>	Monochrome, CGA, EGA



### CONNECTIONS

Function	Label	Function	Label
Light pen	CN1	9-pin digital video port	S1
Composite video output	CN2		

### USER CONFIGURABLE SETTINGS

Function	Label	Position
» Factory configured - do not alter	JP1	Pins 2 & 3 closed
» Factory configured - do not alter	SW1/6	On
» Factory configured - do not alter	SW1/7	N/A
» Factory configured - do not alter	SW1/8	N/A

## DISPLAY CONFIGURATION

Type	SW1/1	SW1/2
Monochrome	On	Off
CGA	Off	On
CGA emulation	Off	Off

## MONITOR SELECTION

Type	SW1/3	SW1/4	SW1/5
Monochrome	On	Off	Off
RGB color	On	Off	Off
Analog monochrome	Off	On	On
Composite color	Off	On	On
EGA	Off	Off	Off

## MISCELLANEOUS TECHNICAL NOTES

Note: DRAM bank identified for location only. Chip size is unidentified.

Search

## Topics

*Articles*

---

*Development*

---

*Books*

---

*Teaching*

---

*Photography*

---

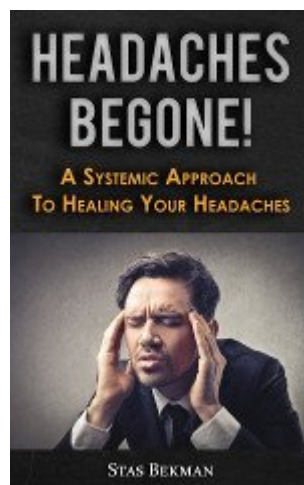
*Bits and Pieces*

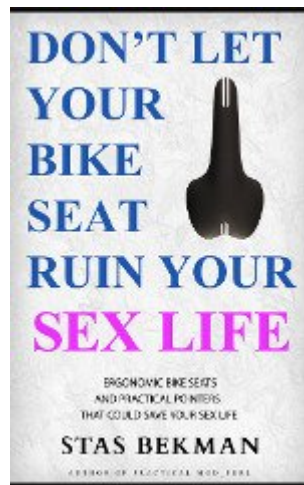
---

*TULARC*

---

## My Books





Discover

[Free Online Books](#)

---

[ [Privacy Policy](#) | [Terms of Use](#) | [About Us](#) | [Search](#) ]

© 1999-2021 [StasoSphere.com](#)