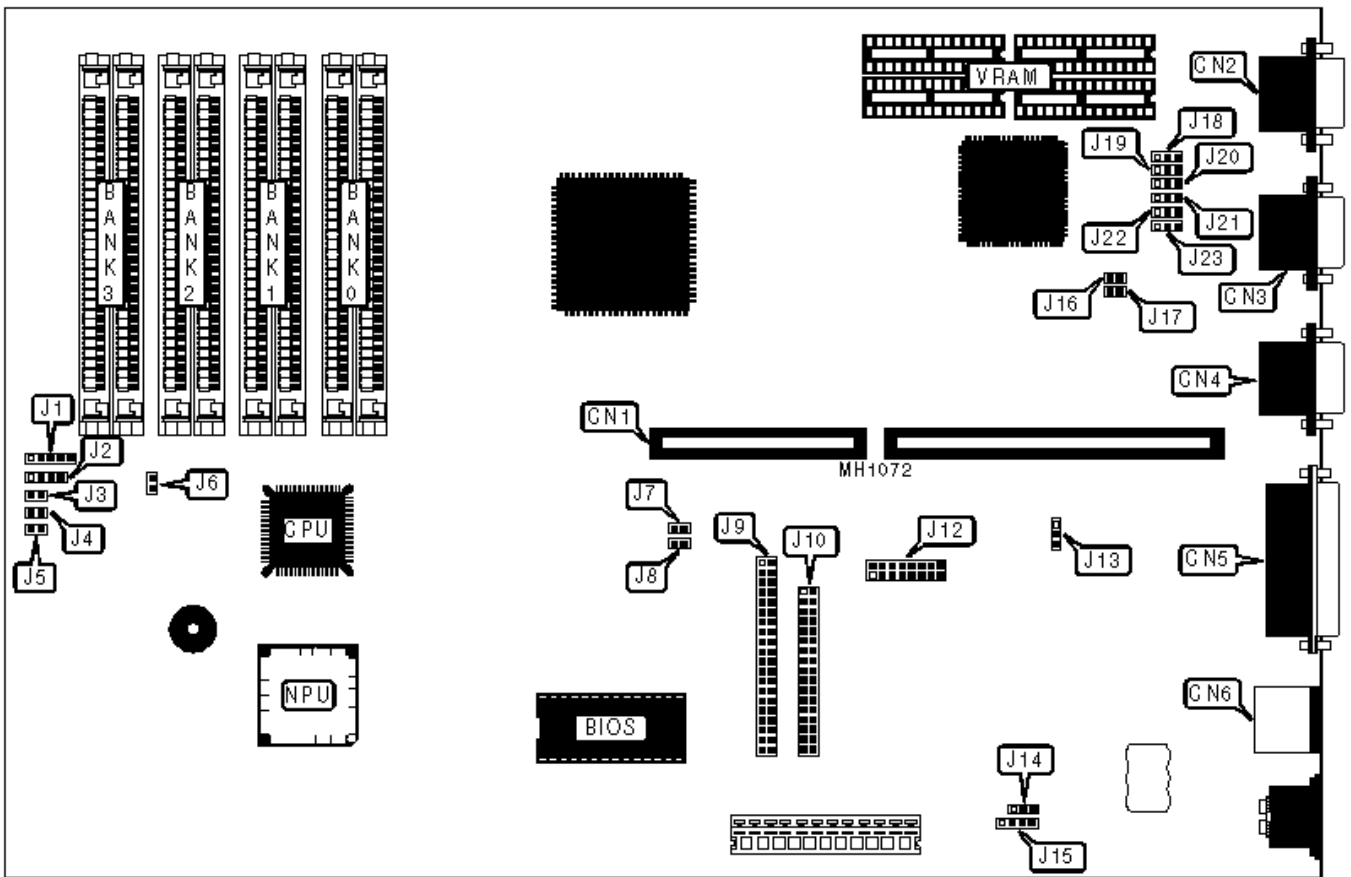


386SX Motherboard Settings and Configuration



COMMODORE BUSINESS MACHINES, INC. 386SX

Processor	80386SX
Processor Speed	16/20/25MHz
Chip Set	Unknown
Max. Onboard DRAM	16MB
Cache	None
BIOS	Commodore
Dimensions	254mm x 218mm
I/O Options	16-bit riser card slot, bus mouse port, floppy drive interface, game port, IDE interface, parallel port, serial ports (2), VGA interface
NPU Options	80387SX



CONNECTIONS

Purpose	Location	Purpose	Location
16-bit riser card	CN1	Turbo LED	J3
VGA port	CN2	Turbo switch	J4
Serial port 2	CN3	Reset switch	J5
Serial port 1	CN4	IDE interface	J9
Parallel port	CN5	Floppy drive interface	J10
Bus mouse port	CN6	Game port	J12
Power LED & keylock	J1	External battery	J15
IDE interface LED	J2		

USER CONFIGURABLE SETTINGS

	Function	Jumper	Position
»	Monitor type select color	J6	Closed
	Monitor type select monochrome	J6	Open
»	IDE interface enabled	J7 and J8	Closed
	IDE interface disabled	J7 and J8	Open
»	Battery type select internal	J14	pins 1 & 2 closed
	Battery type select external	J14	pins 2 & 3 closed
»	VGA port wait states select one	J16	Open
	VGA port wait states select zero	J16	Closed
»	VGA port enabled	J17	Closed
	VGA port disabled	J17	Open
»	Floppy interface enabled	J23	pins 1 & 2 closed
	Floppy interface disabled	J23	pins 2 & 3 closed

DRAM CONFIGURATION

Size	Bank 0	Bank 1	Bank 2	Bank 3
1MB	(2) 256K x 9	(2) 256K x 9	NONE	NONE
1.5MB	(2) 256K x 9	(2) 256K x 9	(2) 256K x 9	NONE

2MB	(2) 256K x 9	(2) 256K x 9	(2) 256K x 9	(2) 256K x 9
2MB	(2) 1M x 9	NONE	NONE	NONE
3MB	(2) 256K x 9	(2) 256K x 9	(2) 1M x 9	NONE
4MB	(2) 1M x 9	(2) 1M x 9	NONE	NONE
5MB	(2) 256K x 9	(2) 256K x 9	(2) 1M x 9	(2) 1M x 9
6MB	(2) 1M x 9	(2) 1M x 9	(2) 1M x 9	NONE
8MB	(2) 1M x 9	(2) 1M x 9	(2) 1M x 9	(2) 1M x 9
12MB	(2) 1M x 9	(2) 1M x 9	(2) 4M x 9	NONE
16MB	(2) 4M x 9	(2) 4M x 9	NONE	NONE

PARALLEL PORT CONFIGURATION

Parallel port	IRQ	J13	J18	J19
LPT1	5	pins 3 & 4 closed	Open	Closed
LPT1	7	pins 1 & 2 closed	Open	Closed
LPT2	5	pins 3 & 4 closed	Closed	Closed
LPT2	7	pins 1 & 2 closed	Closed	Closed
LPT3	5	pins 3 & 4 closed	Closed	Open
LPT3	7	pins 1 & 2 closed	Closed	Open
Disabled	N/A	N/A	Open	Open

SERIAL PORT CONFIGURATION

UART1	UART2	J20	J21	J22
COM1	COM2	pins 1 & 2 closed	pins 1 & 2 closed	pins 1 & 2 closed
COM1	Disabled	pins 1 & 2 closed	pins 2 & 3 closed	pins 1 & 2 closed
COM2	COM1	pins 1 & 2 closed	pins 1 & 2 closed	pins 2 & 3 closed
Disabled	COM1	pins 2 & 3 closed	pins 1 & 2 closed	pins 2 & 3 closed
Disabled	COM2	pins 2 & 3 closed	pins 1 & 2 closed	pins 1 & 2 closed
COM2	Disabled	pins 1 & 2 closed	pins 2 & 3 closed	pins 2 & 3 closed
Disabled	Disabled	pins 2 & 3 closed	pins 2 & 3 closed	N/A

Search

[▲ Top](#)

[◀ Prev](#)

[Up](#)

[Next ▶](#)

Topics

[Articles](#)

[Development](#)

[Books](#)

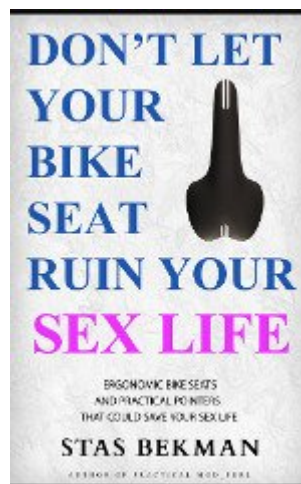
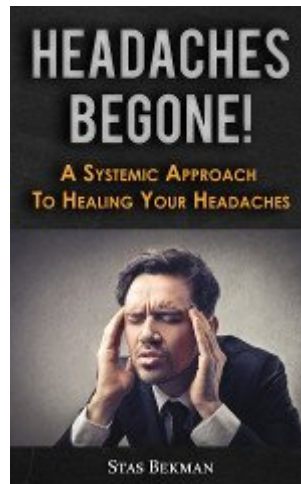
Teaching

Photography

Bits and Pieces

TULARC

My Books



Discover

[Free Online Books](#)
