

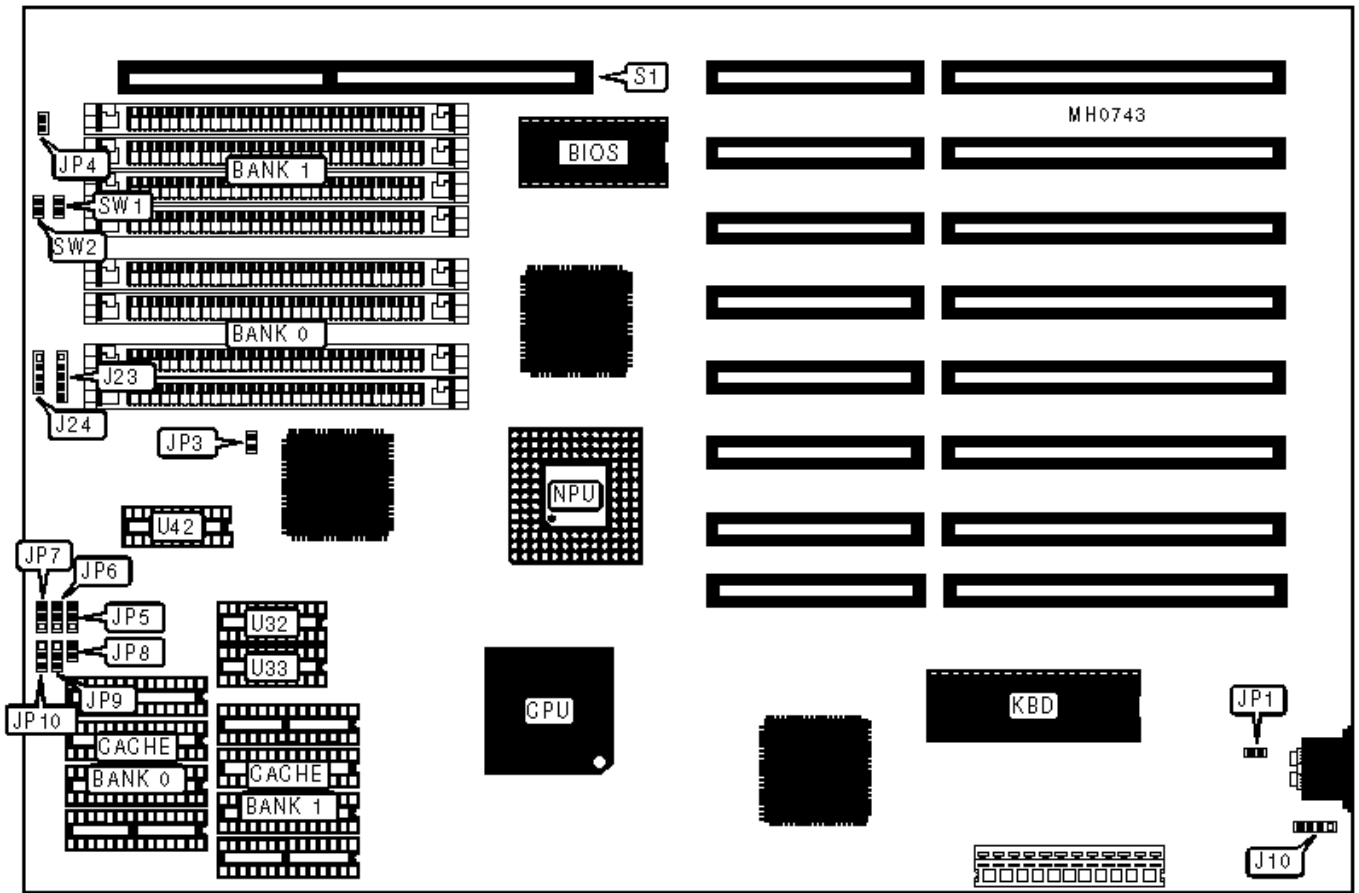
[Articles](#) / [TULARC](#) / [PC info](#) / [Motherboards](#) / [Motherboards](#) /

HOT-307 Motherboard Settings and Configuration

4

SHUTTLE COMPUTER INTERNATIONAL, INC. HOT-307

Processor	80386DX
Processor Speed	33/40MHz
Chip Set	OPTI/ATMEL
Max. Onboard DRAM	32MB
Cache	32/64/128/256KB
BIOS	AMI
Dimensions	330mm x 220mm
I/O Options	32-bit external memory card slot
NPU Options	80387/3167



CONNECTIONS

Purpose	Location	Purpose	Location
External battery	J10	32-bit external memory card	S1
Power LED & keylock	J23	Reset switch	SW1
Speaker	J24	Turbo switch	SW2
Turbo LED	JP4		

USER CONFIGURABLE SETTINGS

Function	Jumper	Position
» Monitor type select monochrome	JP1	Open
»		

	Monitor type select color	JP1	Closed
»	CPU clock source select CLKIN/8	JP3	Closed
	CPU clock source select CLKIN/6	JP3	Open

Note:Both jumpers marked JP3 in the diagram should be configured the same.

DRAM CONFIGURATION

Size	Bank 0	Bank 1
1MB	(4) 256K x 9	NONE
2MB	(4) 256K x 9	(4) 256K x 9
4MB	(4) 1M x 9	NONE
5MB	(4) 256K x 9	(4) 1M x 9
8MB	(4) 1M x 9	(4) 1M x 9
16MB	(4) 4M x 9	NONE
20MB	(4) 1M x 9	(4) 4M x 9
32MB	(4) 4M x 9	(4) 4M x 9

CACHE CONFIGURATION

Size	Bank 0	Bank 1	TAG	Location
32KB	(4) 8K x 8	NONE	(3) 16K x 4	U32 & U33 & U42
64KB	(4) 8K x 8	(4) 8K x 8	(3) 16K x 4	U32 & U33 & U42

128KB	(4) 32K x 8	NONE	(3) 16K x 4	U32 & U33 & U42
256KB	(4) 32K x 8	(4) 32K x 8	(3) 16K x 4	U32 & U33 & U42

CACHE JUMPER CONFIGURATION

Size	JP5	JP6	JP7	JP8	JP9	JP10
32KB	1 & 2	1 & 2	1 & 2	Open	2 & 3	2 & 3
64KB	2 & 3	1 & 2	1 & 2	Open	2 & 3	1 & 2
128KB	2 & 3	1 & 2	2 & 3	Closed	2 & 3	1 & 2
256KB	2 & 3	2 & 3	2 & 3	Closed	1 & 2	1 & 2

Note:Pins indicated should be in the closed position.

Search

[▲ Top](#)

[◀ Prev](#)

[Up](#)

[Next ▶](#)

Topics

Articles
