

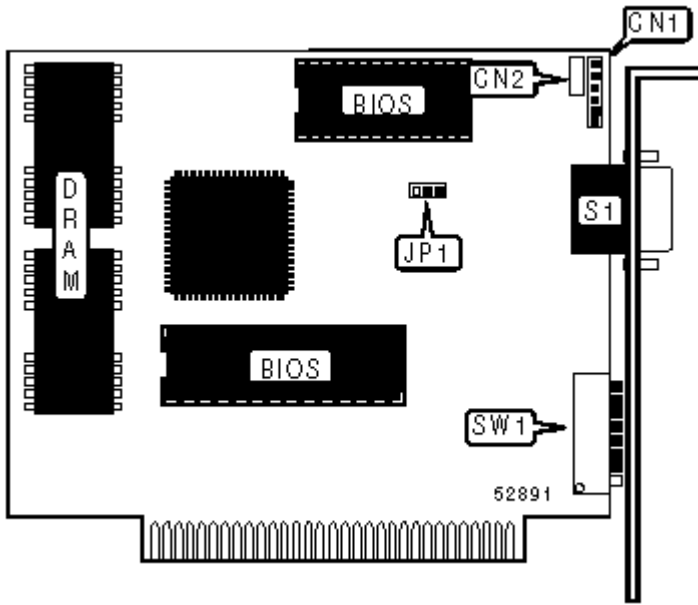
[Articles](#) / [TULARC](#) / [PC info](#) / [Video Cards](#) / [A-B](#) /

GRAPHICS SOLUTION SR video card Settings and Configuration

2

ATI TECHNOLOGIES, INC. GRAPHICS SOLUTION SR

Card Type	Video card
Video Chip Set	VLSI
Highest Resolution Supported	720 x 348
Maximum Video Memory	Unidentified
Data Bus	8-bit ISA
Video Types Supported	Monochrome, CGA, EGA



CONNECTIONS

Function	Label	Function	Label
Light pen	CN1	9-pin digital video port	S1
Composite video output	CN2		

USER CONFIGURABLE SETTINGS

Function	Label	Position
» Factory configured - do not alter	JP1	Pins 2 & 3 closed
» Factory configured - do not alter	SW1/6	On
» Factory configured - do not alter	SW1/7	N/A
» Factory configured - do not alter	SW1/8	N/A

DISPLAY CONFIGURATION

Type	SW1/1	SW1/2
Monochrome	On	Off
CGA	Off	On
CGA emulation	Off	Off

MONITOR SELECTION

Type	SW1/3	SW1/4	SW1/5
Monochrome	On	Off	Off
RGB color	On	Off	Off
Analog monochrome	Off	On	On
Composite color	Off	On	On
EGA	Off	Off	Off

MISCELLANEOUS TECHNICAL NOTES

Note: DRAM bank identified for location only. Chip size is unidentified.

Search