

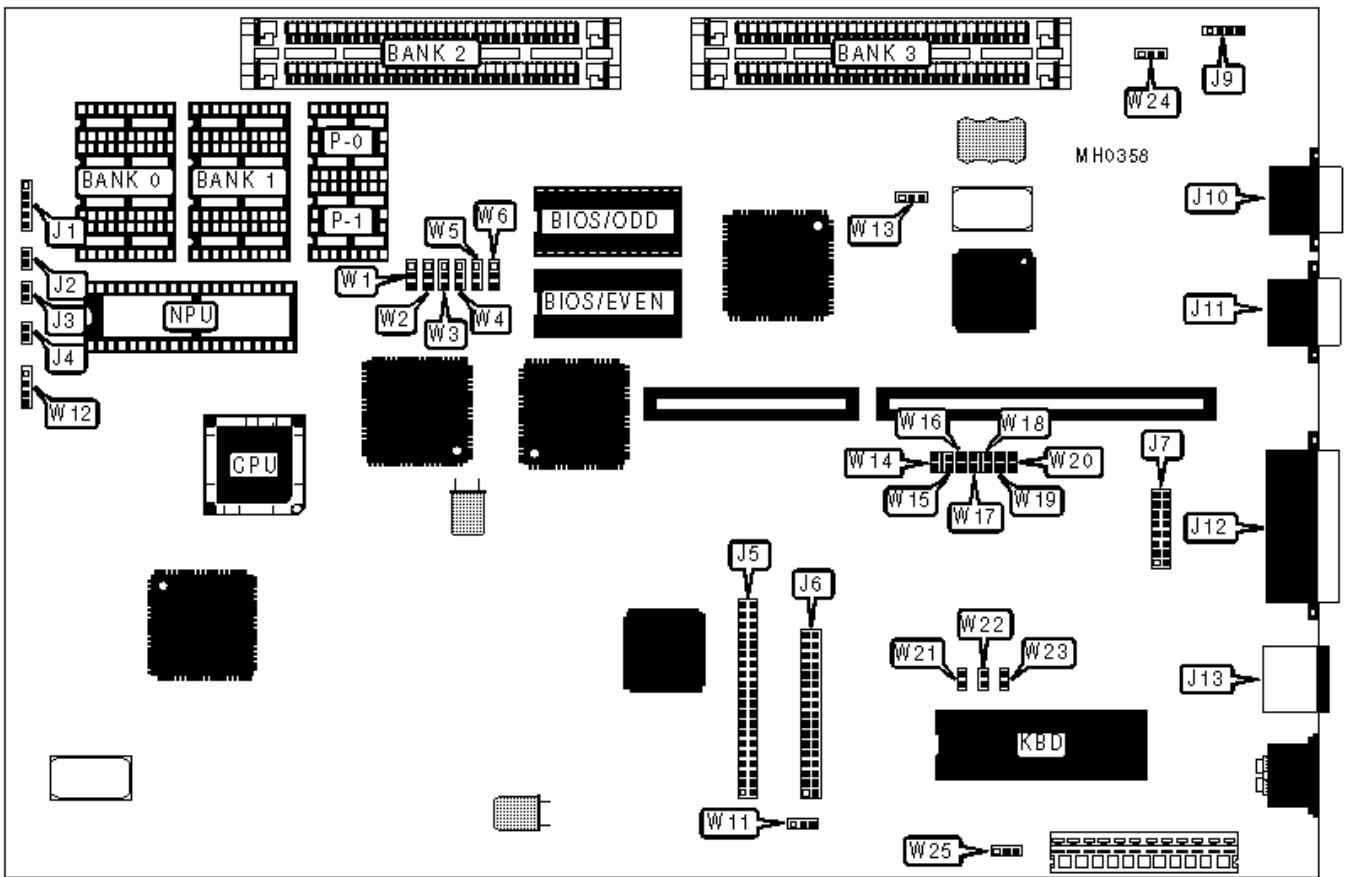
# PTM-1261C/1661C Motherboard Settings and Configuration

2

## **DTK COMPUTER, INC.**

### **PTM-1261C/1661C**

<b>Processor</b>	80286
<b>Processor Speed</b>	12/16MHz
<b>Chip Set</b>	C & T
<b>Max. Onboard DRAM</b>	5MB
<b>Cache</b>	None
<b>BIOS</b>	DTK
<b>Dimensions</b>	333mm x 222mm
<b>I/O Options</b>	Floppy drive interface, game port, IDE interface, parallel port, PS/2 mouse interface, serial ports (2)
<b>NPU Options</b>	80287



### CONNECTIONS

Purpose	Location	Purpose	Location
Power LED & keylock	J1	External battery	J9
Turbo LED	J2	Serial port 2	J10
Reset switch	J3	Serial port 1	J11
Turbo switch	J4	Parallel port	J12
IDE interface	J5	PS/2 mouse interface	J13
Floppy drive interface	J6	IDE interface LED	W12
Game port	J7		

### USER CONFIGURABLE SETTINGS

	<b>Function</b>	<b>Jumper</b>	<b>Position</b>
»	IDE type select new standard	W11	pins 2 & 3 closed
	IDE type select original standard (i.e., CP-342)	W11	pins 1 & 2 closed
»	Floppy drive interface (J6) enabled	W14	Closed
	Floppy drive interface (J6) disabled	W14	Open
»	IDE interface enabled	W21	Closed
	IDE interface disabled	W21	Open
»	Game port enabled	W22	Closed
	Game port disabled	W22	Open
»	Monitor type select monochrome	W23	Open
	Monitor type select color	W23	Closed
»	Battery select internal	W24	pins 2 & 3 closed
	Battery select external	W24	pins 1 & 2 closed
»	Power good signal detect from power supply	W25	pins 2 & 3 closed
	Power good signal detect from board	W25	pins 1 & 2 closed

#### DRAM CONFIGURATION



4MB	1 & 2	1 & 2	1 & 2	1 & 2	1 & 2	1 & 2
5MB	2 & 3	2 & 3	2 & 3	2 & 3	2 & 3	2 & 3

Notes: Pins designated should be in the closed position.

#### PARALLEL PORT CONFIGURATION

Setting	W13	W19	W20
LPT1	pins 1 & 2 closed	Closed	Closed
LPT2	pins 2 & 3 closed	Open	Open
Disabled	N/A	Open	Closed
Disabled	N/A	Closed	Open

#### SERIAL PORT 1 CONFIGURATION

Setting	W13	W15	W16
COM1	pins 1 & 2 closed	Closed	Closed
COM3	pins 2 & 3 closed	Open	Open
Disabled	N/A	Open	Closed
Disabled	N/A	Closed	Open

#### SERIAL PORT 2 CONFIGURATION

Setting	W13	W17	W18
COM2	pins 1 & 2 closed	Closed	Closed

COM4	pins 2 & 3 closed	Open	Open
Disabled	N/A	Open	Closed
Disabled	N/A	Closed	Open

2

Search

[▲ Top](#)

[◀ Prev](#)

[Up](#)

[Next ▶](#)

## Topics

[Articles](#)

---

[Development](#)

---

[Books](#)

---

[Teaching](#)

---

[Photography](#)

---

[Bits and Pieces](#)

---

[TULARC](#)

---

## My Books